

# Coppermills

3 bedroom House

**Pembroke Road, London, E17**

Offers in excess of £875,000



A home to grow into. Walthamstow Village area location.. A three bedroom mid terrace Victorian house extend into the loft SPP, as the family grows. It features a good living space and generous a size rear garden that is full of character.

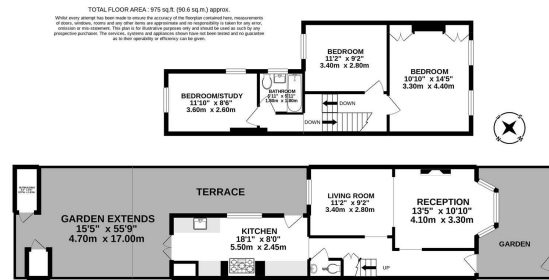
On the ground floor this family home benefits from a through lounge. It is full of light throughout, and enjoys Wooden floors, high ceilings. Also we spotted a fire surrounds and two chimneys breasts that appear to be intact.

You will find a good size Kitchen with its own dining area that leads onto the laid to lawn garden with some mature shrubs. The first floor has three good size bedrooms and a family bathroom. A loft that you can extend into - subject to planning consents.

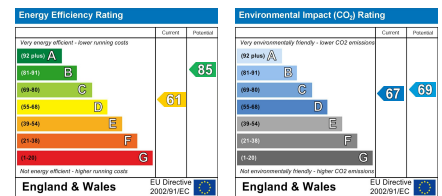
A great home for  
a growing family!

To view this property  
info@coppermills.co.uk  
020 8509 9170

# Pembroke Road, London, E17



## EPC details



info@coppermills.co.uk  
 T: 020 8509 9170  
 M: 077 8217 0925  
 www.coppermills.co.uk  
 63 St James Street  
 London E17 7PJ

You may download, store and use the material for your own personal use and research. You may not republish, retransmit, redistribute or otherwise make the material available to any party or make the same available on any website, online service or bulletin board of your own or of any other party or make the same available in hard copy or in any other media without the owner's express prior written consent. The owner's copyright must remain on all reproductions of material taken.